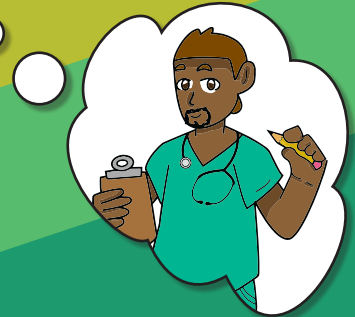
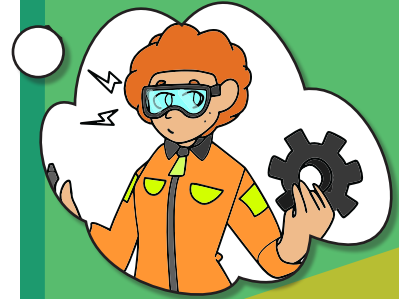
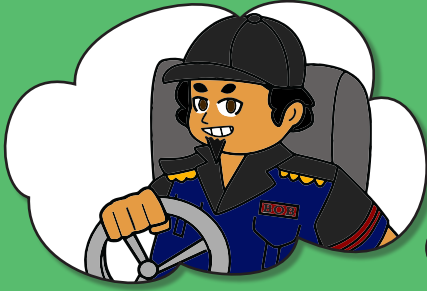


Where are the Jobs?



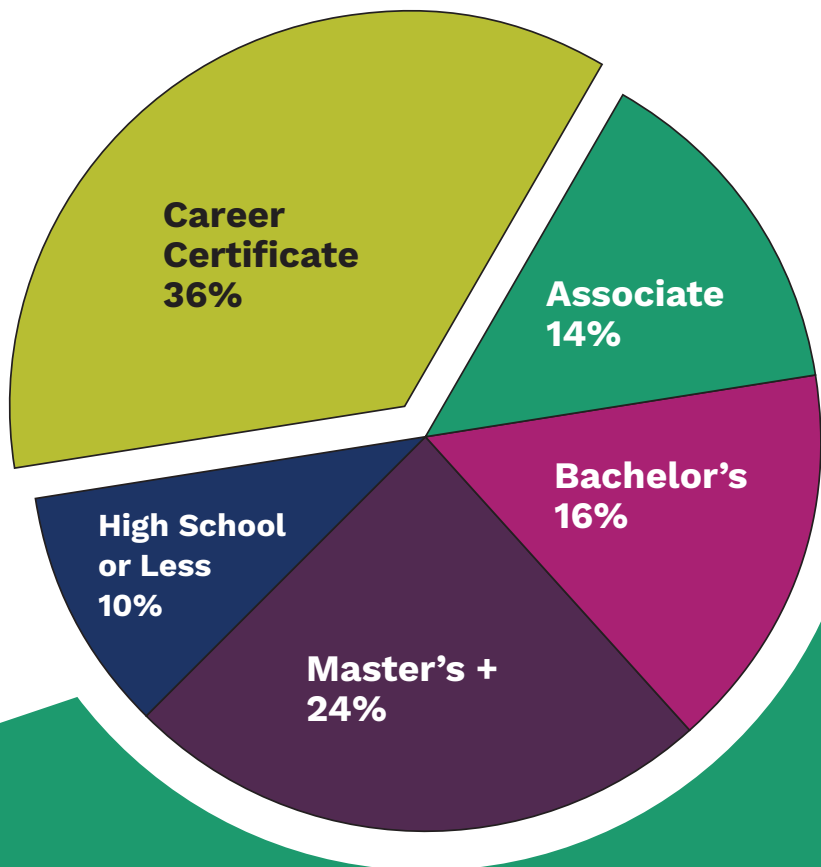
We Have Good News!

LOCAL EMPLOYERS ARE LOOKING FOR TRAINED WORKERS!

Did you know that Florida residents with a career certificate can earn almost \$10,000 more than those with a high school diploma? If you are somebody who is interested in learning how to get a career certificate, this guide is for you. It was made to provide you information about career options that are available here and now. We want to show you how easy and affordable it can be to get high quality training for in-demand jobs. Using the following pages, you can match your personal goals and skill sets with obtainable credentials and find a long-term career path in Central Florida.

Florida is facing a skills gap. Two-thirds of all jobs created by 2025 will require post-secondary education. We are committed to increasing the number of adults in our community with a high-quality credential or degree to 60%. This means schools are providing affordable training opportunities, and employers are hiring!

Level of Education Required for Florida's 50 Fastest-Growing Occupations



What do you mean when you say High Quality Degree and Credential?

#1 INDUSTRY RECOGNIZED

Either developed and offered by, or endorsed by, a nationally recognized industry association organization that represents a large portion of the industry; A credential that is sought or accepted by companies within the industry for hiring or recruitment; Includes credentials from vendors, e.g. Microsoft.

#2 STACKABLE

Part of a sequence of credentials that can be accumulated over time to build an individual's qualifications and help them move along a career path to different and potentially higher-paying jobs. A H.S. diploma or G.E.D., industry certifications, associate degrees, bachelor's degrees, and master's degrees are examples.

#3 PORTABLE

A credential that is recognized and accepted in settings other than that in which it was earned: Across geographic areas; At other educational institutions; By other industries; By other companies.

#4 ACCREDITED

A credential earned at an institution of higher learning that meets acceptable quality. In order to receive federal financial aid, students must enroll in a school or program that the U.S. Dept. of Education recognizes as accredited.

What is happening in our local area?

CareerSource Central Florida are our local workforce experts. They have identified 6 high-demand industries where the need for skilled workers is growing. These industries include:

- Advanced Manufacturing
- Construction
- Healthcare
- Hospitality
- Information Technology & Finance
- Trade, Transportation and Logistics

You might be wondering... What type of entry level jobs are being offered? How long will training take? What is the average* starting salary? Can I move up from the starting point? Each of these questions will be explored in the following pages as we take a deeper dive into each industry area.**

* The following wages are estimates of entry-level salaries and do not include the value of fringe benefits.

** The following are examples of career pathways for each of the high growth industries.

You can find more options here: <https://bit.ly/2XAKi7a>

Advanced Manufacturing

This industry improves the performance of manufacturing with the creation of new science and technology geared towards production. If you enjoy working with your hands and using tech to solve problems, this may be the career path for you.



Pathway 1

Now:

Welder - Entry Level

Average Wage: \$14-\$18

Training: 20 Weeks

Later:

Welder - Advanced

Average Wage: \$16-\$20

Training: 20 Weeks

Pathway 2

Now:

Assembly Technician

Average Wage: \$14-\$17

Training: 10 Weeks

Later:

Inspection Technician

Average Wage: \$17-\$19

Training: Ongoing, "On-the-Job" Training

Construction

This industry is the process of building structures, such as homes or roads, from the ground up. Construction differs from manufacturing, in that manufacturing typically involves mass production of objects, while construction typically involves multiple approaches to on-site building and maintenance. If you like to work with your hands and create in a variety of places, this may be the career for you.



Pathway 1

Now:

Construction Laborer

Average Wage: \$9-\$12

Training: 5 Weeks

Later:

Carpenter

Average Wage: \$14-\$17

Training: 10 Weeks

Pathway 2

Now:

**Heavy Equipment Mechanic
Apprentice**

Average Wage: \$15-\$17

Training: 12 Months

Later:

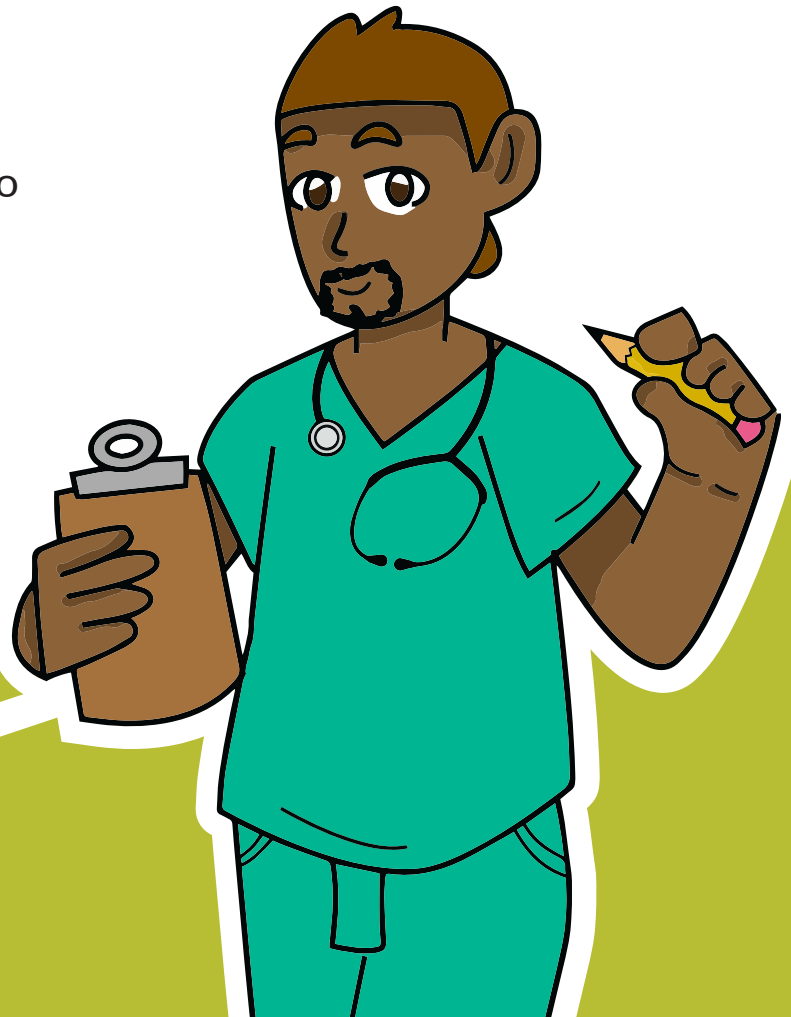
Advance Level Tech 1

Average Wage: \$35-\$45

Training: Ongoing, "On-the-Job"
Training

Healthcare

This industry has thousands of companies that specialize in dental, medical, pharmaceutical or therapeutic services. Settings from medical offices, to long-term care, to healthcare consulting firms, means you can have a variety of work opportunities. If you care about others and like to help people, this may be the career for you.



Pathway 1

Now:

Nursing Assistant (CNA)

Average Wage: \$10-\$12

Training: 4-12 Weeks

Later:

Practical Nurse (LPN)

Average Wage: \$16-\$21

Training: 12-24 Months

Pathway 2

Now:

Dental Assistant

Average Wage: \$14-\$16

Training: 10 Months

Later:

Dental Hygienist

Average Wage: \$20-\$25

Training: 2 Years

Hospitality

This field includes the service industry and tourism. Within these categories are careers in lodging, food and beverage, event planning, theme parks, culinary, travel, and more. If you like to provide excellent customer service and pride yourself on offering the most exquisite of experiences, this may be the career for you.



Pathway 1

Now:

Cook

Average Wage: \$11-\$13

Training: 600 Hours*

Later:

Chef Assistant

Average Wage: \$14-\$16

Training: 1200 Hours

Pathway 2

Now:

Front Desk/Guest Services Agent

Average Wage: \$14-\$15

Training: 450 Hours

Later:

Front Desk Supervisor

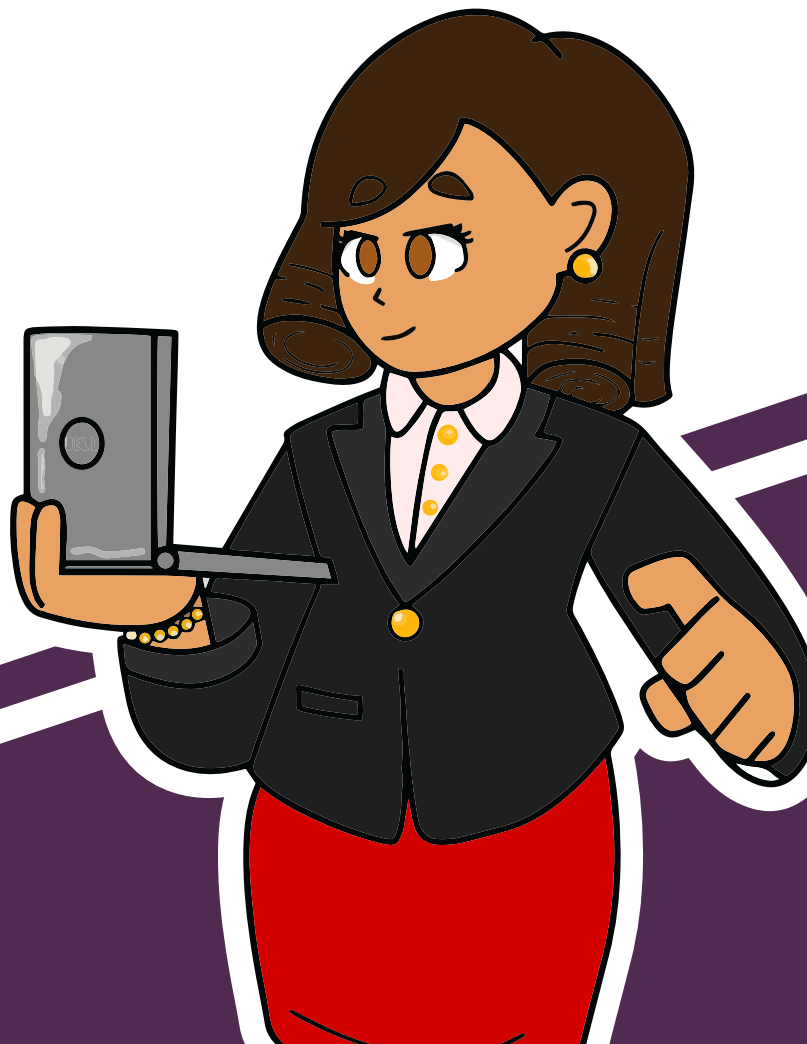
Average Wage: \$15-\$18

Training: 150 Hours

*600 hours equal approximately 1 semester.

Information Technology (IT) and Finance

This industry includes computer, technology, and finance-focused careers. IT is a forward moving industry and is always improving and creating tools that make a virtual world a better world. The finance sector needs people who like to work with numbers, analyze information, or handle money. Both industries include never-ending opportunities. If you like taking a methodical approach and working with computers or numbers, this may be the career for you.



Pathway 1

Now:

Help Desk

Average Wage: \$15-\$24

Training: 1,050 Hours*

Later:

Network Analyst

Average Wage: \$21-\$26

Training: 900 Hours

Pathway 2

Now:

Bookkeeper/Clerk

Average Wage: \$10-\$13

Training: 900 Hours

Later:

Payroll Specialist

Average Wage: \$14-\$18

Training: 24-36 Months

*600 hours equal approximately 1 semester.

Trade, Transportation & Logistics

This industry entails a wide range of careers and positions. Several available jobs in Central Florida include warehousing and truck driving. Other positions include shipping/receiving and maintenance. Driving may include local, regional, and national routes. If you like to keep things moving efficiently, this may be the career path for you.



Pathway 1

Now:

Driver (Local CDL B)

Average Wage: \$12-\$17

Training: 3 Weeks

Later:

Driver (Over the Road)

Average Wage: \$15-\$25

Training: 3-9 Weeks

Pathway 2

Now:

Distribution Operations Technician

Average Wage: \$15-\$17

Training: 10 Weeks

Later:

Logistics Coordinator

Average Wage: \$17-\$19

Training: Ongoing, "On-the-Job"
Training

Career Planning & Exploration

Still trying to figure out what's a fit for your interests and skills? Want to know the average salaries for these local positions and more? You might want to consider doing some career exploration:

The logo for FloridaShines, featuring the word "FloridaShines" in blue with a yellow sunburst icon above the letter "i".

<https://bit.ly/3d1j3Dz>

The logo for MY NEXT MOVE, with "MY NEXT" in blue and "MOVE" in blue with a yellow lightning bolt icon above the letter "O".

<https://bit.ly/30LbAGc>

The logo for EMPLOY FLORIDA, with "EMPLOY" and "FLORIDA" in orange, a yellow arc above the text, and a blue lightning bolt icon above the letter "O" in "FLORIDA".

<https://bit.ly/2Y2eXXy>

ARE YOU READY TO TAKE THE NEXT STEP?

TIP #1

Go visit the campus in-person, talk to the instructors, and find a student enrolled in a program you've targeted to answer your questions!

TIP #2

Complete your free financial aid application at: www.fafsa.ed.gov and make sure to explore all of the available financial aid options:

- Federal Pell Grants
- State scholarships (such as Bright Futures)
- CareerSource Central Florida (provides access to training funding from the federal Workforce Innovation and Opportunity Act, or WIOA)
- Veterans Affairs (VA) Educational Benefits
- Local scholarships and other agency funding (Florida Prepaid, County-based Community Action Program)

TIP #3

Informational Interviewing – locate someone employed in an occupation of interest to you and meet with them to talk about their career. You are not asking for a job, but trying to gain a better understanding of the realities and demands of that particular employment setting. Click here for a guide to informational interviewing: <https://valenciacollege.edu/students/career-center/documents/interview.pdf>

Here are some local schools that can get you started on your career journey!



This guide was produced by:



UpliftED

1940 Cannery Way, Orlando, FL 3280

goingtocollege@hfuw.org

www.upliftedcf.org

Adapted from the "Where are the Jobs?" Guide.



<https://careeredgefunders.org/where-are-the-jobs-guide/>

Designed by students from the Digital Design program at oTECH.



A special thank you to our partners who contributed to the content of this resource.

